



**CANNOCK CHASE HIGH SCHOOL**

A C H I E V E M E N T F O R A L L

## A Level

**Course** – We are currently working with a two year A Level course.

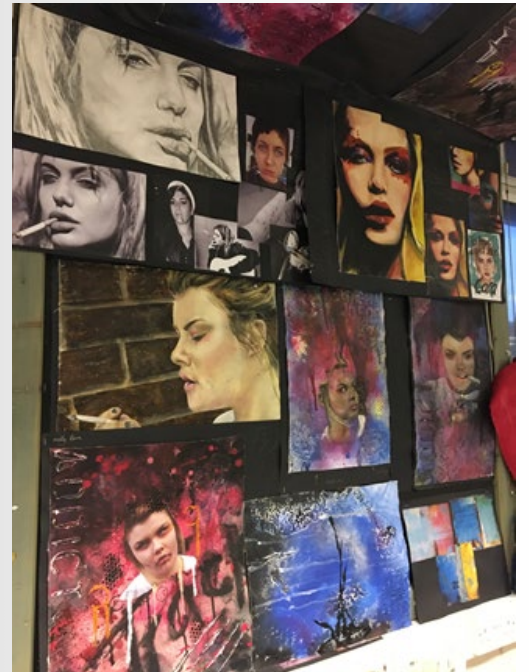
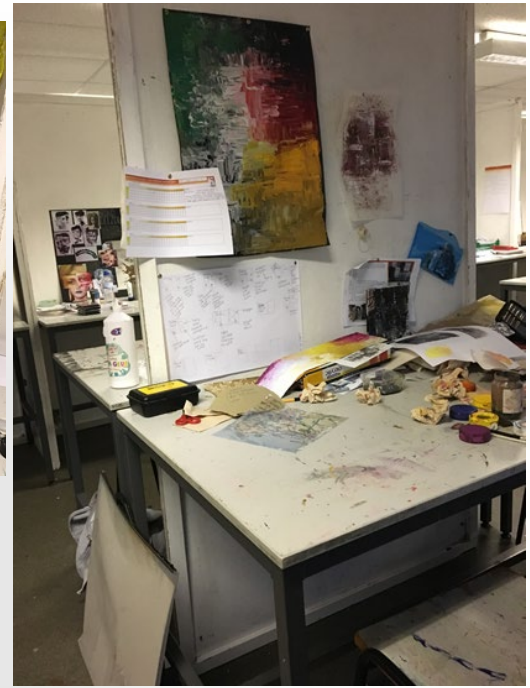
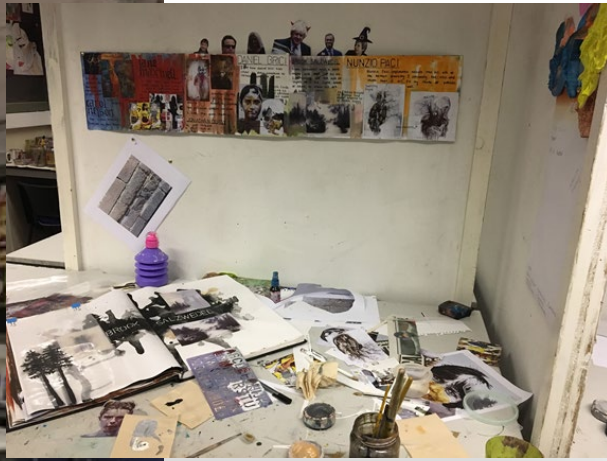
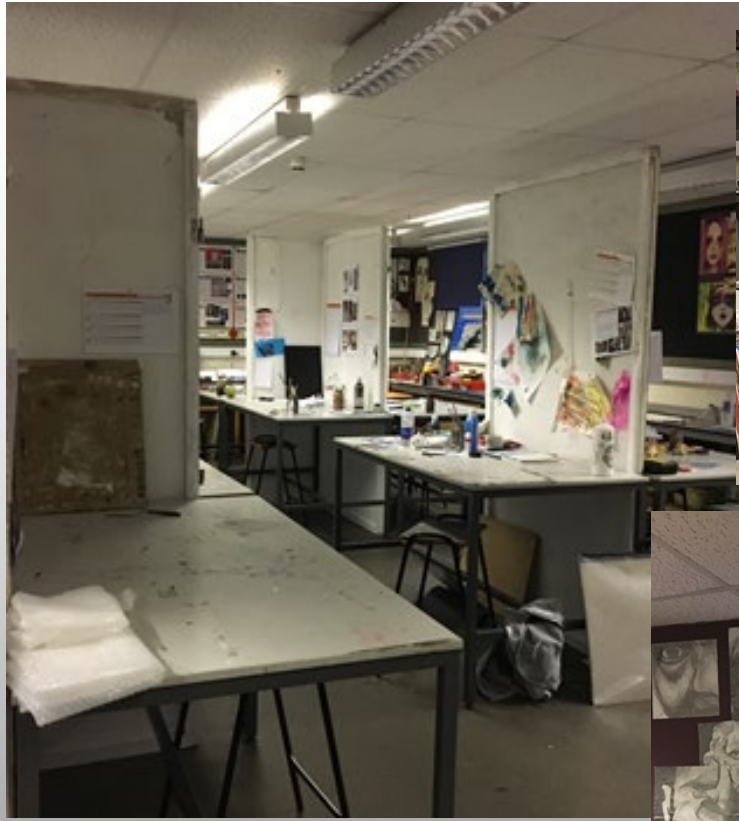
**Make the right decision** – Students should have already completed a GCSE in art and be able to demonstrate a good level of artistic, literacy and analytical skills. All students are expected to complete practical work over the summer in preparation for September.



**CANNOCK CHASE HIGH SCHOOL**

A C H I E V E M E N T F O R A L L





## A Level

**Unit 1** (60% of A Level grade): A personal investigation based on an idea, issue or concept of your choice, supported by **1000-3000 word written investigation**. Students select their own starting point for the Personal Investigation. Students can develop their own personal preferences, leading to more independent thinking and development of work.

**Unit 2** (40% of A level grade): Externally set assignment. Examination papers are released to students during the first school week in February.



**CANNOCK CHASE HIGH SCHOOL**

A C H I E V E M E N T F O R A L L



# Introduction period

During term 1 and 2 students will be working through our specially designed task booklet. Designed to refresh and introduce a range of techniques required;

- Mind map
- Collage
- Observational studies
- Watercolours
- Cropping and foreshortening
- Oil painting
- Mixed media
- Experimentation
- Outcome

# A Level Art and Design

## Human Anatomy



# Introduction period

## REVIEW/PIN MARKING

### Effort-o-meter

I didn't try - I hated it	I didn't really make an effort	I did the essentials	I gave it my best	Worked my socks off

### PRAISE - What went well?

### IMPROVE - Even better if...?

### NEXT - What will I take forward? What needs work? Be specific.

### Raw Marks

AO1 Research	/24
AO2 Refine	/24
AO3 Record	/24
AO4 Present	/24
<b>Total</b>	<b>/96</b>

### Staff feedback

## Task 17: DIRT

WK19-20

Assess your work against the four assessment objectives, setting clear targets for this week.

### AO1 Research

WWW

/24

EBI

### AO2 Refine

WWW

/24

EBI

### AO3 Record

WWW

/24

EBI

### AO4 Present

WWW

/24

EBI

**Total** /96

## Materials

**Students are required to provide their own sketchbook. We recommend A3 in size and a minimum of 140 gsm paper.**

### **Optional extras;**

- Paint brushes
- A range of pencils

This would be helpful but not essential. Many retailers sell on Amazon now, however art materials can be found in shops such as the Range or Hobbycraft.

### **Useful links**

- **Pink Pig Paper Company** - <https://www.the-pink-pig.co.uk/collections/sketchbooks>
- **Dryad Art Supplies** – <https://www.dryadeducation.co.uk/>

- **DEVELOP** – sustained & focused ideas informed by contextual/ artists sources
- **EXPERIMENT** – with resources, materials, techniques by reviewing & modifying
- **RECORD** – ideas & observations, reflect on work in progress
- **PRESENT** – realise intentions through a personal & informed response
  
- **PRACTICAL COURSEWORK PROJECT**
  
- **PRACTICAL EXAM**

### Useful links;

- **The student art guide** <https://www.studentartguide.com/>
- **Art Careers** [Art Careers | The Art Career Project](#)
- **Creativejourneyuk.org** [Creative Journeys \(creativejourneyuk.com\)](#)



**CANNOCK CHASE HIGH SCHOOL**

A C H I E V E M E N T F O R A L L